



Compressor  
Voltage Code : FZ

CAJ4517Z-FZ

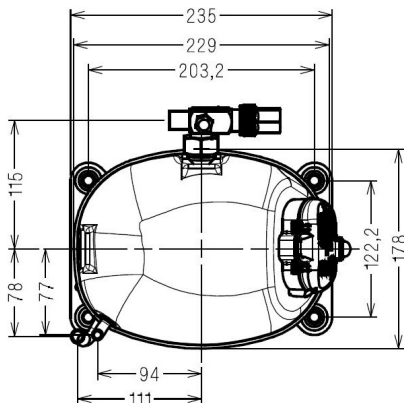
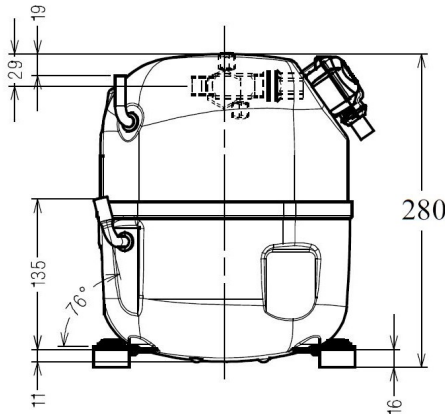
High Temp. Commercial (HP)

220 - 240V 1~ 50 Hz

R452A / R404A / R448A / R449A

AJ4517Z-FZ3C

Conditions	Frequency	Nominal Cooling Capacity		Sound Power ISO3745 / ISO 3743-1
		Watts	BTU/h	
CECOMAF / R452A	50 Hz	3160	10775	64 dBA
CECOMAF / R404A	50 Hz	3160	10777	64 dBA
CECOMAF / R448A	50 Hz	3148	10736	64 dBA
CECOMAF / R449A	50 Hz	3152	10748	64 dBA



\* CECOMAF : T°Cond. 55.0°C / T°Evap. 5.0°C / T°Return gas temp.. 32.0°C  
T°Subcooling. 0.0K

Certificates :



<b>Displacement (cc)</b>	25,95
<b>Net Weight (Kg)</b>	21.6
<b>Oil Quantity (cc)</b>	475.0
<b>Oil Type</b>	Polyolester
<b>Expansion Device</b>	Capillary_Tube/Expansion_Valve
<b>Cooling</b>	Fan
<b>Main Winding (Ohm)</b>	1.7
<b>Start Winding (Ohm)</b>	6.8
<b>Current</b>	
RLA (A)	7.3
MCC (A)	12.7
LRA (A)	39
<b>Electrical Equipment</b>	CSR
<b>Overload</b>	MST00AGZ
Time Check	2.8s - 5.2s / 32.5 A
Open Temp	120° C
Close Temp	61° C
Optional	T0861
<b>Start Capacitor</b>	100 µF / 330 V
<b>Run Capacitor</b>	17.5 µF / 400 V
<b>Potential Relay</b>	RVA4AP**
Pick Up	300/328V
Drop Out	60/121V
<b>Refrigerating connection for</b>	
Suction Tube	15.9 (5/8")
Discharge Tube	9.5 (3/8")
Process Tube	6.35 (1/4")

Note : Tecumseh reserves the right to change information contained in this document without notification.



**Tecumseh**

<b>CAJ4517Z-FZ</b>	<b>Tension FZ : 220 - 240V 1~ 50 Hz</b>
--------------------	---

Les performances sont données dans les **conditions CECOMAF** :  
 Condition Dew  
 The performance data are in **CECOMAF conditions** :  
 Dew Condition

Gaz aspirés : 32.0 °C  
 Sous refroidissement : 0.0 K  
 Return gas : 32.0 °C  
 Subcooling : 0.0 K

© 2021 Tecumseh Products Company  
All rights reserved

**50 Hz R452A**

**N°2286**

4   T condensation	5   T évaporation	(°C)	-25	-20	-15	-10	-5	0	5	10	15
<b>30</b>	1   P frigorifique	(Watt)		1766	2242	2803	3461	4227	5112	6128	7286
	2   P absorbée	(W)		796	867	935	1002	1071	1143	1221	1307
	3   I absorbée	(A)		4.14	4.42	4.68	4.95	5.20	5.45	5.69	5.92
<b>40</b>	1   P frigorifique	(Watt)			1869	2358	2926	3584	4344	5217	6216
	2   P absorbée	(W)			939	1029	1116	1202	1290	1381	1478
	3   I absorbée	(A)			4.82	5.22	5.61	5.99	6.37	6.74	7.10
<b>50</b>	1   P frigorifique	(Watt)				1900	2377	2925	3558	4288	5127
	2   P absorbée	(W)				1100	1214	1324	1434	1545	1660
	3   I absorbée	(A)				5.53	6.05	6.56	7.07	7.58	8.08
<b>60</b>	1   P frigorifique	(Watt)					1815	2253	2758	3344	4023
	2   P absorbée	(W)					1291	1432	1569	1707	1845
	3   I absorbée	(A)					6.27	6.92	7.56	8.20	8.83

**50 Hz R404A**

**N°224LT-FZ**

4   T condensation	5   T évaporation	(°C)	-25	-20	-15	-10	-5	0	5	10	15
<b>30</b>	1   P frigorifique	(Watt)	1460	1868	2350	2916	3576	4341	5222	6230	7376
	2   P absorbée	(W)	762	840	912	980	1047	1114	1185	1261	1344
	3   I absorbée	(A)	4.08	4.37	4.64	4.91	5.16	5.41	5.65	5.87	6.09
<b>40</b>	1   P frigorifique	(Watt)		1531	1955	2444	3008	3658	4406	5264	6242
	2   P absorbée	(W)		893	990	1080	1166	1251	1336	1425	1518
	3   I absorbée	(A)		4.68	5.08	5.48	5.86	6.23	6.60	6.95	7.30
<b>50</b>	1   P frigorifique	(Watt)			1550	1962	2429	2964	3578	4284	5094
	2   P absorbée	(W)			1040	1158	1270	1378	1485	1592	1702
	3   I absorbée	(A)			5.30	5.82	6.33	6.83	7.33	7.81	8.28
<b>60</b>	1   P frigorifique	(Watt)				1473	1843	2262	2742	3295	3938
	2   P absorbée	(W)				1211	1355	1493	1626	1758	1890
	3   I absorbée	(A)				5.94	6.58	7.21	7.83	8.44	9.04

1 = cooling capacity 2 = power input 3 = current 4 = condensing temperature 5 = evaporating temperature

**Nota : Tecumseh se réserve le droit de modifier les informations contenues dans ce document sans préavis.**

**Note : Tecumseh reserves the right to change information contained in this document without notification.**



**Tecumseh**

<b>CAJ4517Z-FZ</b>	<b>Tension FZ : 220 - 240V 1~ 50 Hz</b>
--------------------	---

Les performances sont données dans les <b>conditions CECOMAF</b> :	Gaz aspirés :	32.0 °C
Condition Dew	Sous refroidissement :	0.0 K
The performance data are in <b>CECOMAF conditions</b> :	Return gas :	32.0 °C
Dew Condition	Subcooling :	0.0 K

<b>50 Hz R448A (*)</b>											
											<b>N°2888</b>
4   T condensation	5   T évaporation	(°C)	-25	-20	-15	-10	-5	0	5	10	15
<b>30</b>	1   P frigorifique	(Watt)	1186	1574	2035	2582	3226	3981	4857	5869	7028
	2   P absorbée	(W)	671	741	808	874	939	1006	1075	1149	1229
	3   I absorbée	(A)	3.59	3.85	4.12	4.38	4.63	4.88	5.12	5.35	5.57
<b>40</b>	1   P frigorifique	(Watt)		1293	1706	2187	2751	3409	4173	5058	6075
	2   P absorbée	(W)		791	881	966	1050	1133	1217	1303	1393
	3   I absorbée	(A)		4.14	4.52	4.90	5.27	5.64	6.01	6.36	6.70
<b>50</b>	1   P frigorifique	(Watt)			1371	1789	2273	2835	3488	4246	5122
	2   P absorbée	(W)			927	1041	1151	1259	1365	1472	1581
	3   I absorbée	(A)			4.72	5.23	5.74	6.24	6.73	7.22	7.69
<b>60</b>	1   P frigorifique	(Watt)				1396	1801	2268	2811	3444	4179
	2   P absorbée	(W)				1089	1234	1374	1511	1647	1783
	3   I absorbée	(A)				5.34	5.99	6.64	7.28	7.91	8.53

<b>50 Hz R449A (*)</b>											
											<b>N°2282</b>
4   T condensation	5   T évaporation	(°C)	-25	-20	-15	-10	-5	0	5	10	15
<b>30</b>	1   P frigorifique	(Watt)	1187	1575	2037	2584	3228	3983	4861	5873	7032
	2   P absorbée	(W)	671	741	808	874	939	1006	1075	1149	1229
	3   I absorbée	(A)	3.59	3.85	4.12	4.38	4.63	4.88	5.12	5.35	5.57
<b>40</b>	1   P frigorifique	(Watt)		1294	1707	2189	2753	3412	4177	5062	6079
	2   P absorbée	(W)		791	881	966	1050	1133	1217	1303	1393
	3   I absorbée	(A)		4.14	4.52	4.90	5.27	5.64	6.01	6.36	6.70
<b>50</b>	1   P frigorifique	(Watt)			1373	1791	2275	2838	3492	4250	5127
	2   P absorbée	(W)			927	1041	1151	1259	1365	1472	1581
	3   I absorbée	(A)			4.72	5.23	5.74	6.24	6.73	7.22	7.69
<b>60</b>	1   P frigorifique	(Watt)				1398	1803	2271	2815	3448	4184
	2   P absorbée	(W)				1089	1234	1374	1511	1647	1783
	3   I absorbée	(A)				5.34	5.99	6.64	7.28	7.91	8.53

1 = cooling capacity 2 = power input 3 = current 4 = condensing temperature 5 = evaporating temperature

(\*) Veuillez vous référer strictement aux Recommandations d'Utilisation et Bulletins Marketing Tecumseh du fait de la température de refoulement élevée pour les applications LBP.  
 (\*) Due to very high discharge temperature especially on LBP conditions, please strictly refer to Tecumseh Guidelines & Marketing Bulletin when using this refrigerant.

**Nota : Tecumseh se réserve le droit de modifier les informations contenues dans ce document sans préavis.**

**Note : Tecumseh reserves the right to change information contained in this document without notification.**

© 2021 Tecumseh Products Company  
All rights reserved